

# Tutorial On Making Christmas Cards In Photoshop CS2

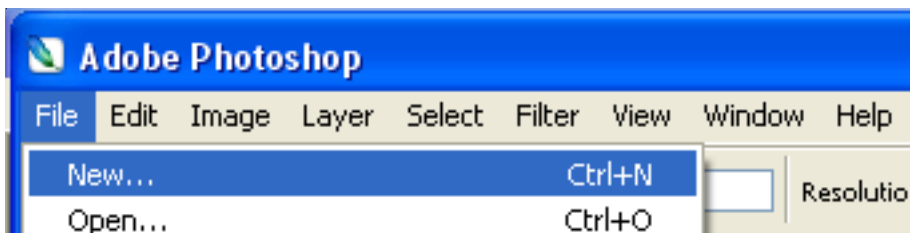
by James J Duffy

**The paper that you should use for cards need to able to print on both sides.**

I use Epson Double-Sided Matte Paper 8.5 x 11

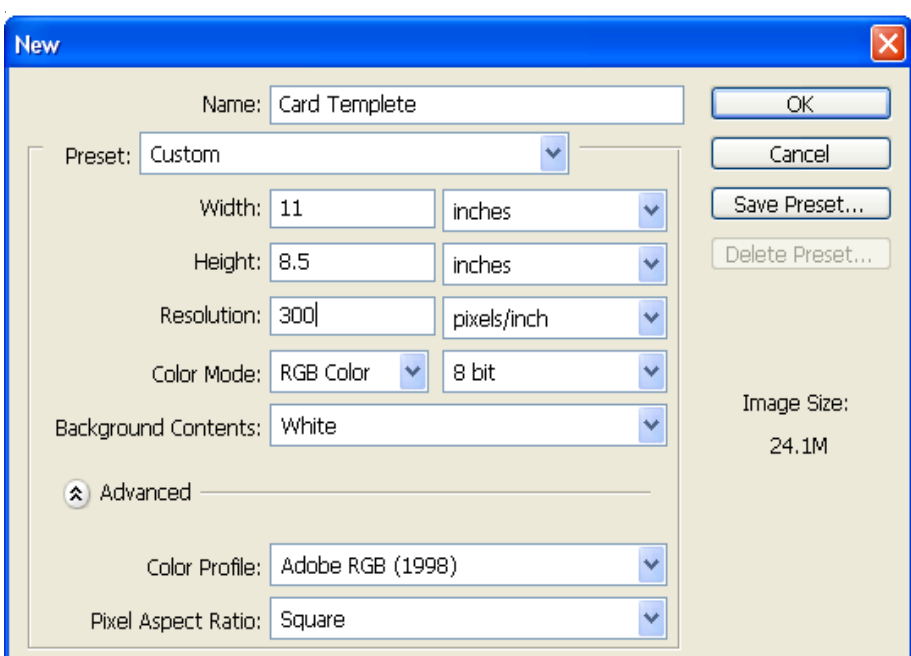
This will give you a card 5 1/2 x 8 1/2 when done folded in half

■ Start by opening a new blank file



■ Use these settings

Name: Card Template  
Width: 11 inches  
Height: 8.5 inches  
Resolution: 360



■ Now turn on the **Rules** by using the short cut Ctrl + R

Then you need turn on the **Smart Guides** by going to Menu, View, Show, and selecting Smart Guides

Now you need to set your guides by using your move tool, then using the mouse pointer to drag a line and place on your canvas

From the top ruler

one line 1/4 inch down from the top edge

one line 1/4 inch up from the bottom edge

From the side ruler

one line 1/4 inch from the left edge

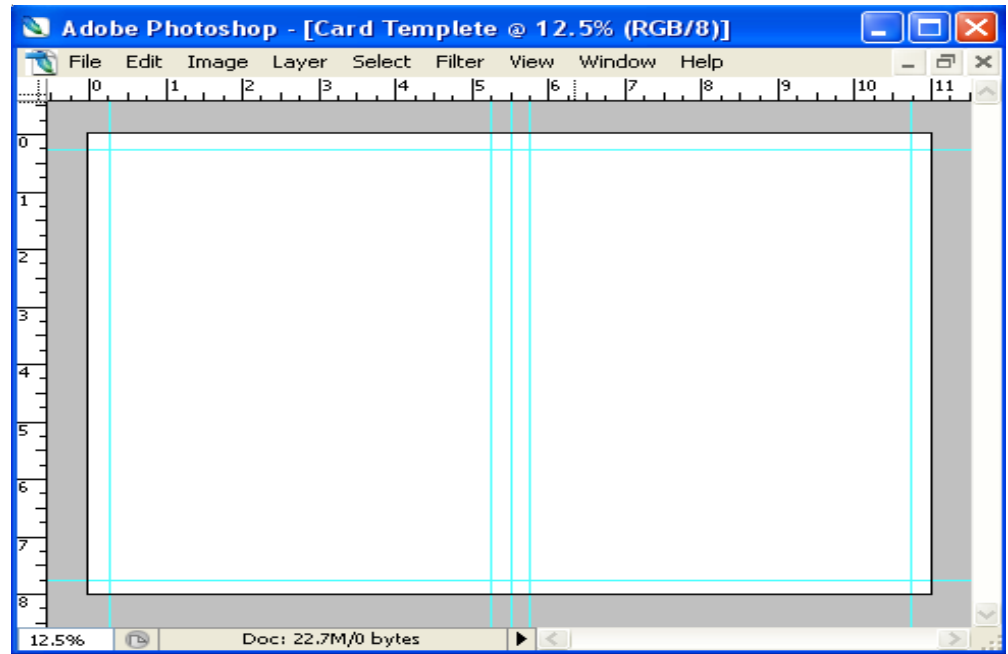
one line 1/4 inch from the right edge

one line center

one line 1/4 inch left of your center line

one line 1/4 inch right of your center line

- This is the way it should look now

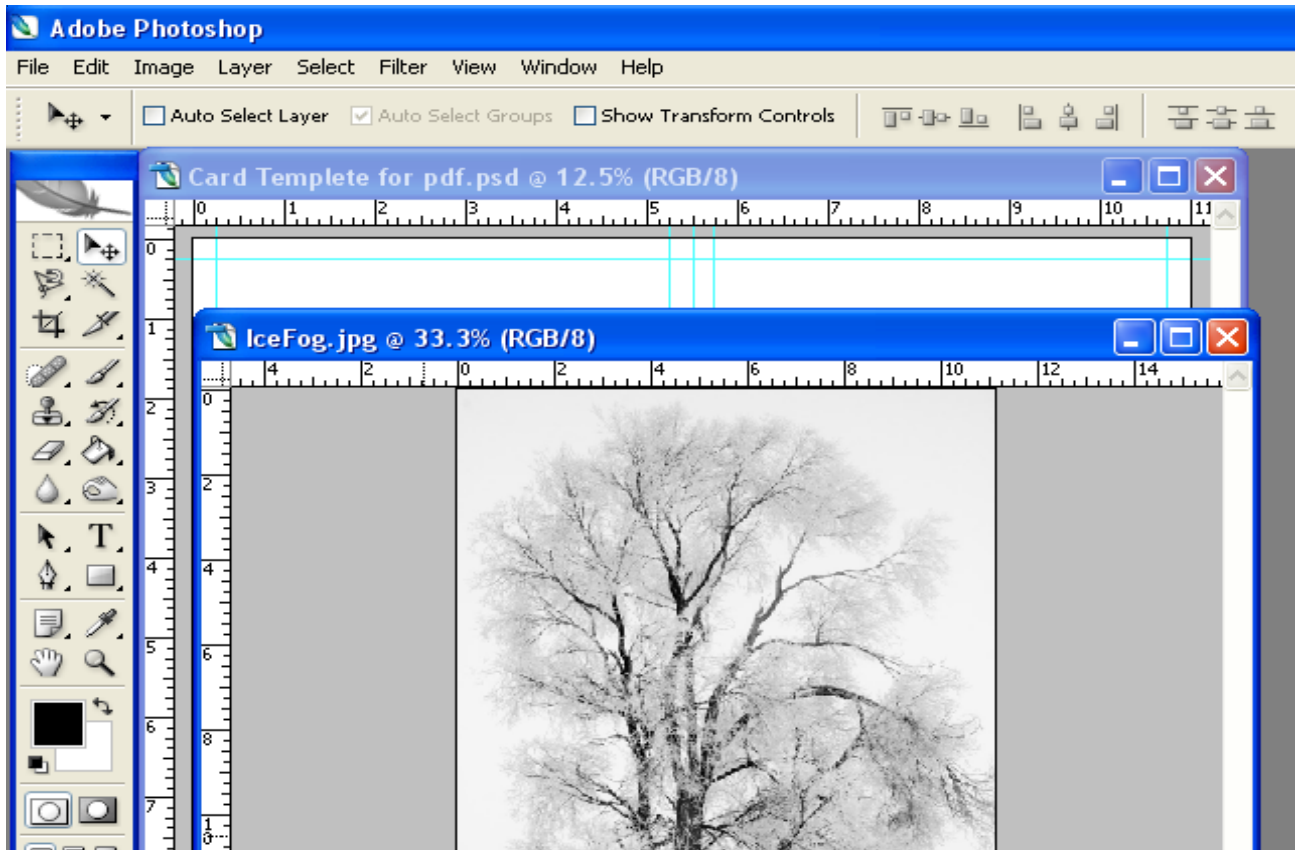


- Now to add your image

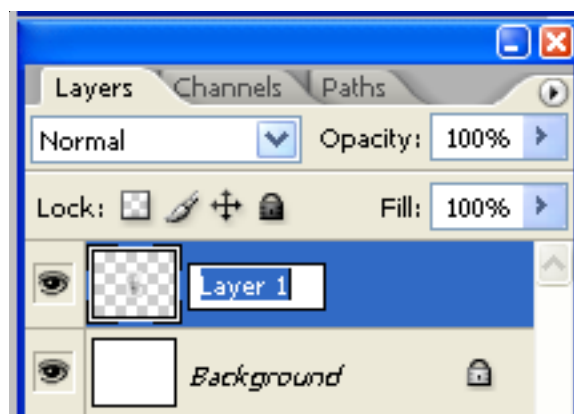
Open the file to add to your card

You should have to files open now

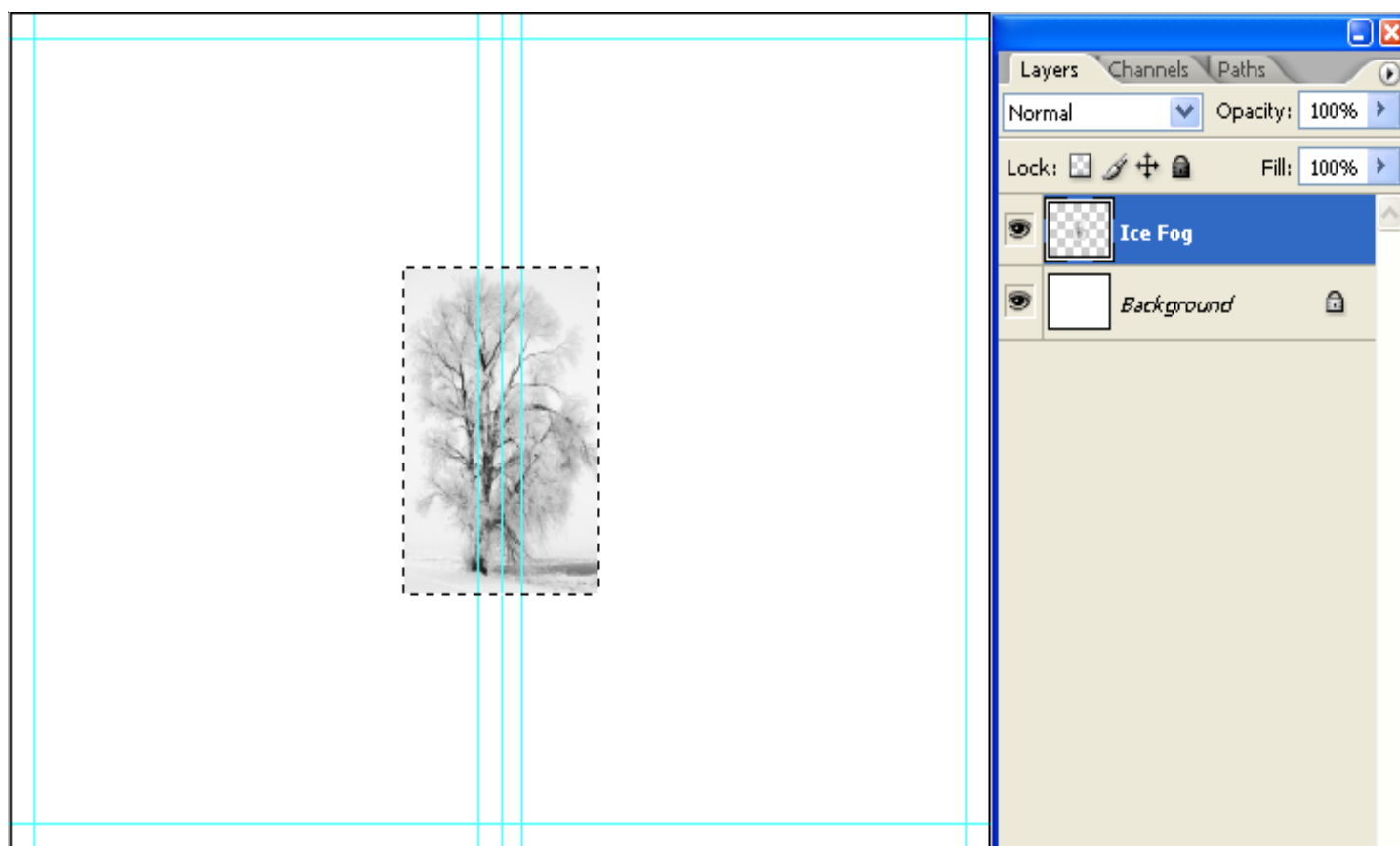
With the move tool selected Shift click on the picture and drag it on to the card template file which will put it on a new layer, then close the image file as you don't need it anymore



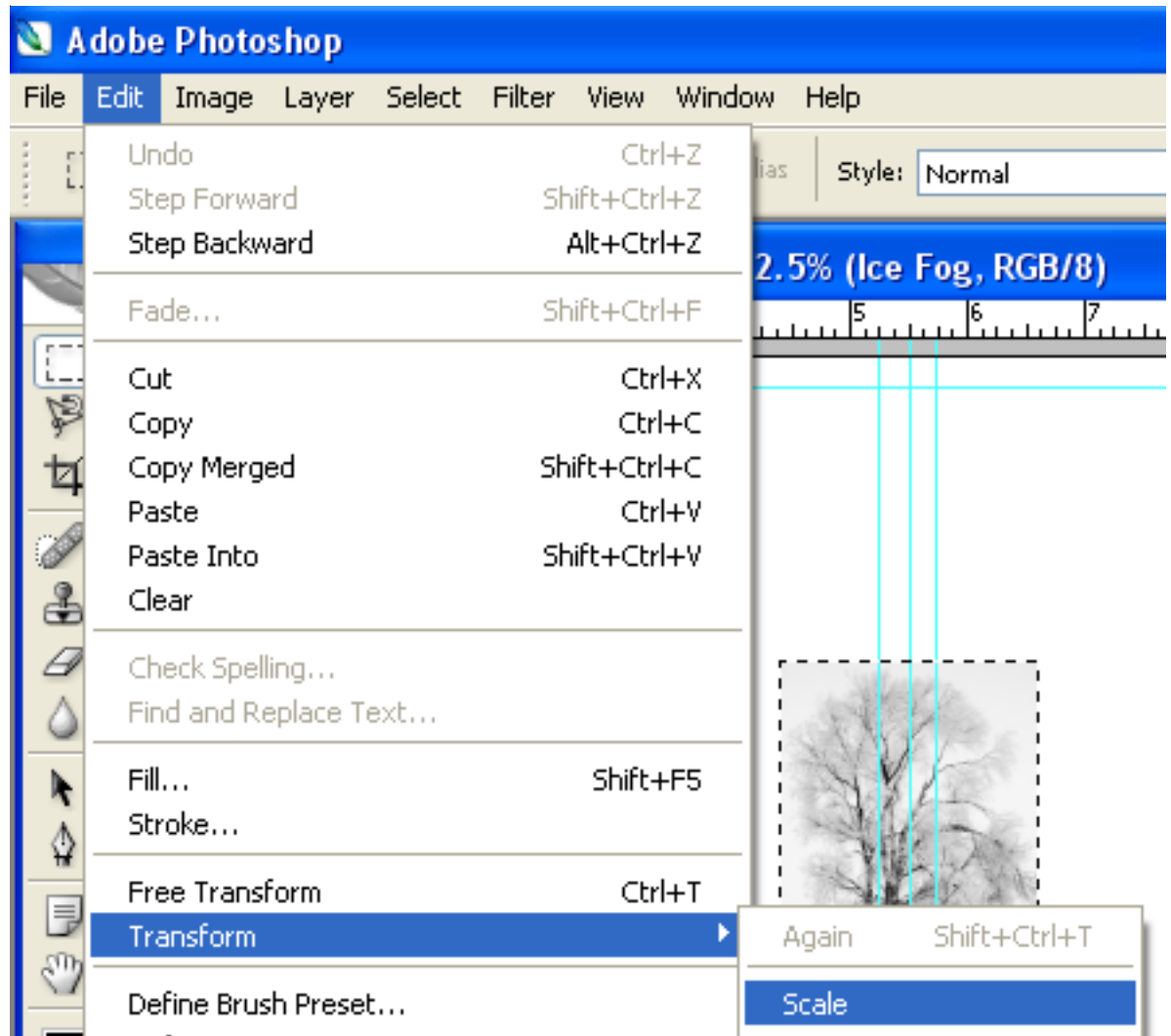
With your layer palette turn on you will see your new layer which I rename by double clicking where it say Layer 1 and just type what you want to call the layer (which I put in the name of the image)



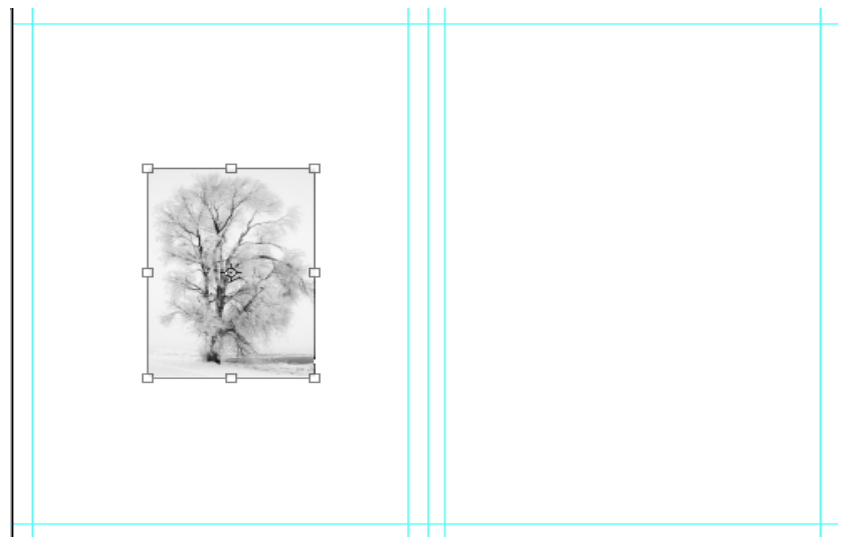
Now you need to make a selection of the image, holding down the Ctrl key and click on the Layer Thumbnail which will make your selection on that layer



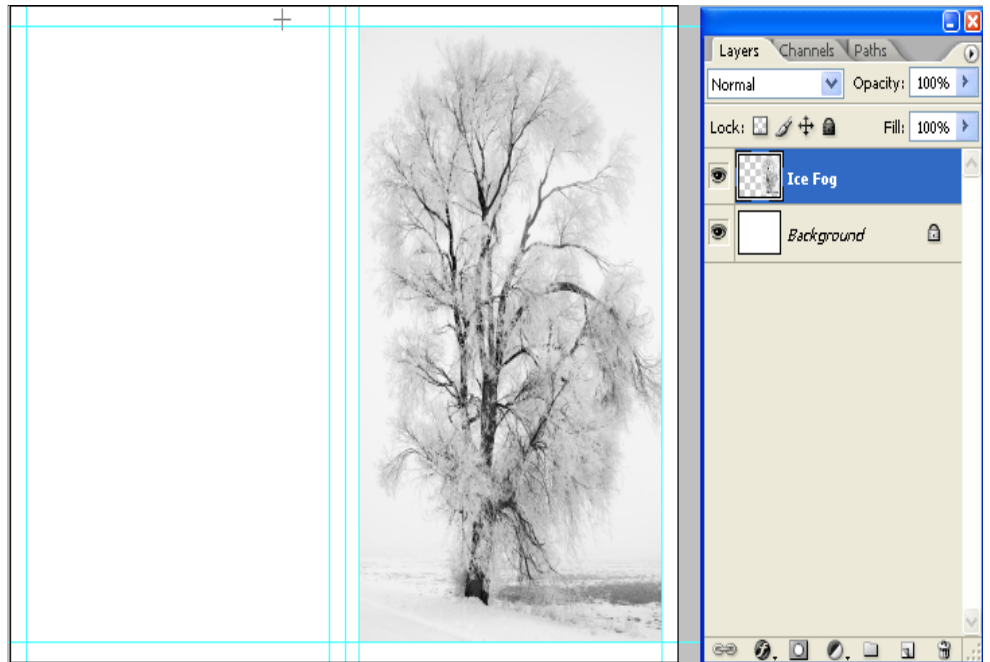
- Now go to edit, transform, scale



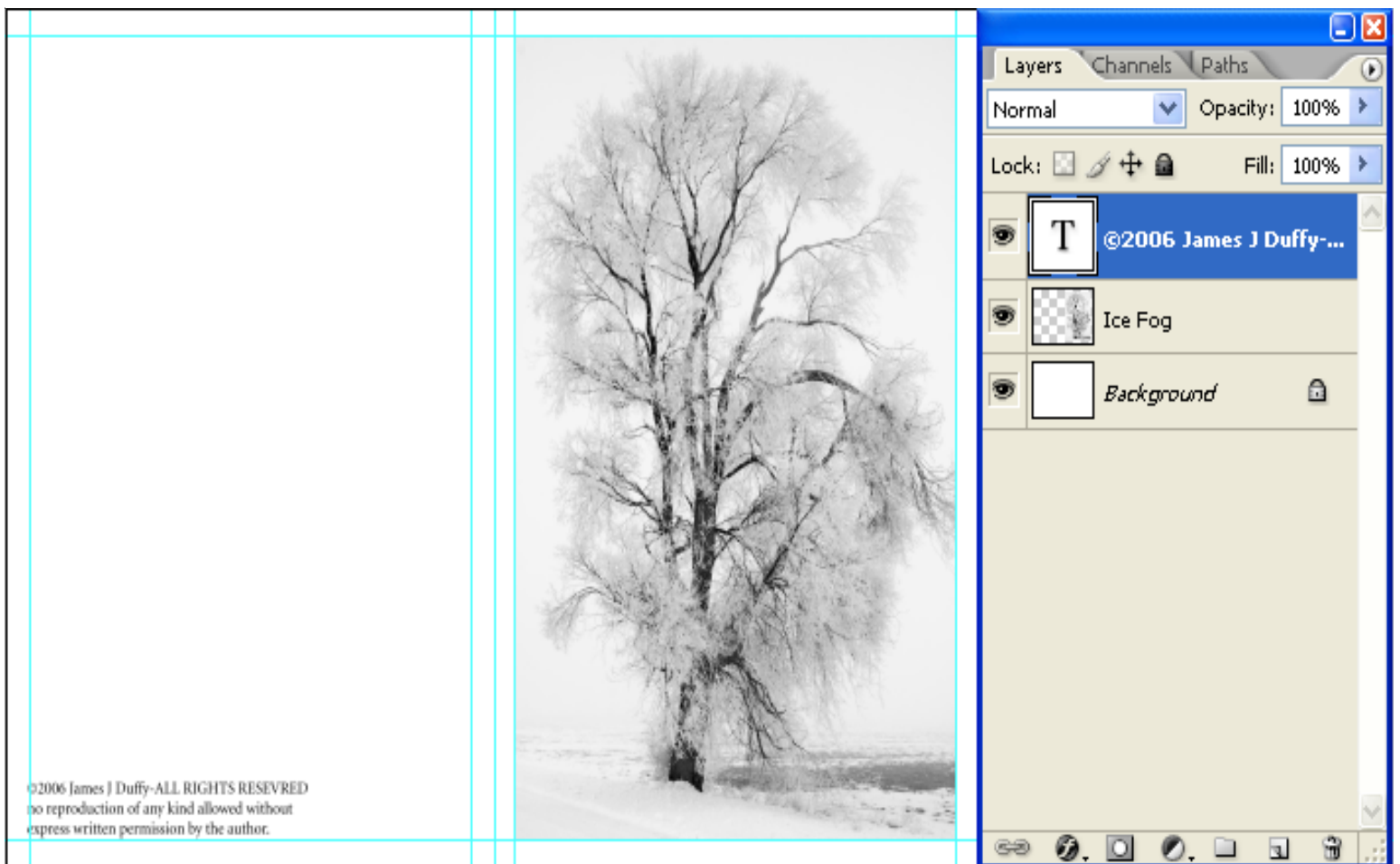
- Now you can move and scale your image into position on the right side



■ This is what you want it to look like

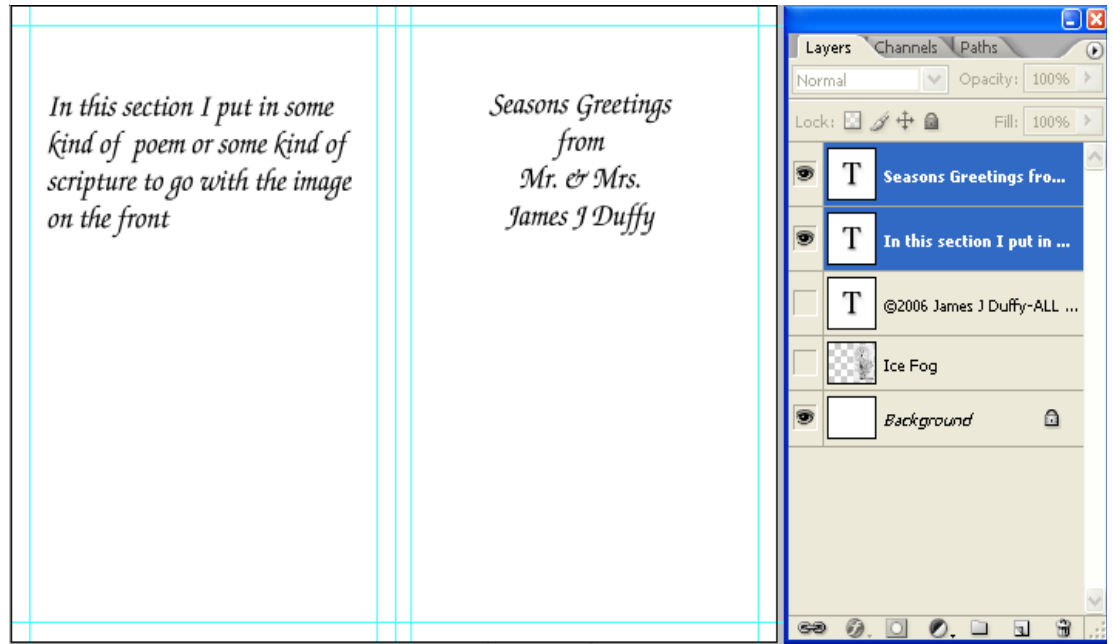


■ Now for the back side of the card, using the text tool, I put my copyright information

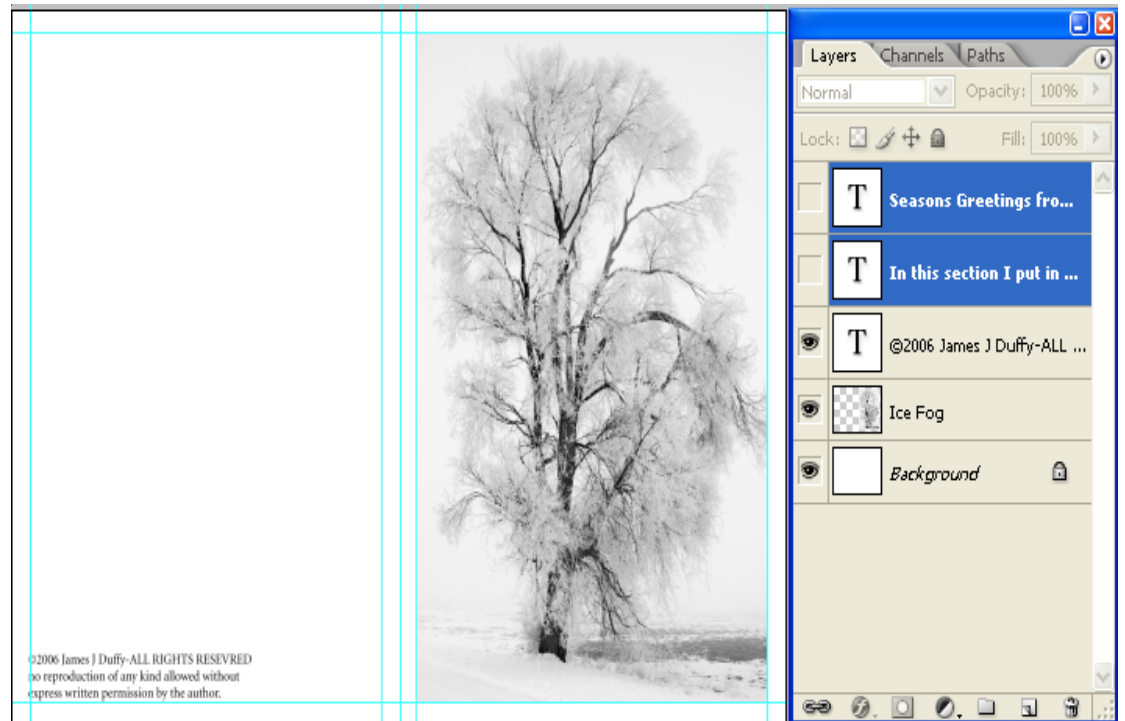


- Now for the inside of the card
  - Turn off the 2 top layers by clicking on the eye
  - Each time you add a new text tool it will add a new layer for you*

Then with your text tool, add the text to the left side  
 Then do the same for the right side



**Inside of card**



**Front of card**

- Now to print your card just turn on the 2 layer for the front of card, change your print to landscape mode and hit print
- Turn your paper over , turn off the 2 layer, turn on the other two and print the inside of the card
- Now just fold your card in half and you're done

## Notes

**You can set this for small card (2) to a page by change you guides**

**You can use a different paper but make sure it easy to fold and can get a good crease**

**You can as many images and texts layers as you like just remember to turn the layers on and you could also put them into groups**

**Any question or comments you caan e-mail me at  
[jimduffy@bresnan.net](mailto:jimduffy@bresnan.net)**

**Have fun with this and send out your cards  
this year!**