

Here's a folding easel for your puzzle box lid

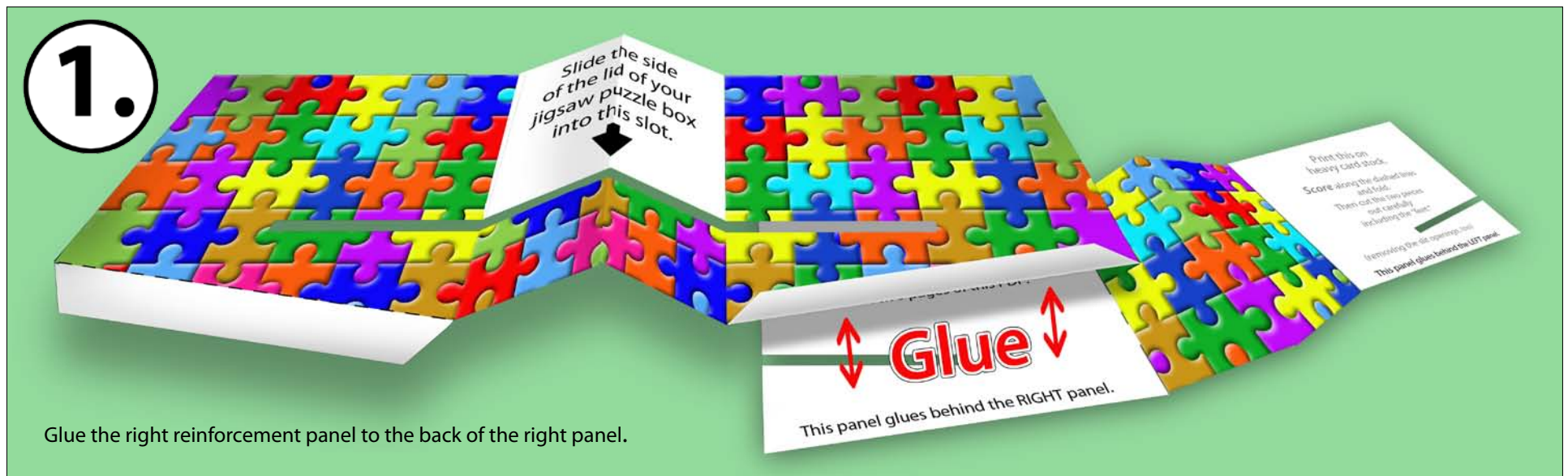
Watch a 2-minute video of the assembly of this project here:

<https://youtu.be/-2JMGOj1R9g>

When working on a jigsaw puzzle, I like to consult the completed picture on the lid of the box the puzzle came in. Having an easel for the lid tilts the picture at a convenient angle and takes up less space on the table.

My previous versions of puzzle box lid easels worked fine in use, but couldn't fold for storage or shipment with a gift puzzle. This version folds flat and can easily be modified to be a 5x7" greeting card appropriate for giving someone a puzzle for an occasion. Before making one as a card, you might want to be sure you have an envelope which will hold a 5x7" card.

Print pages 3 and 4 of this PDF on sturdy card stock. My home printer even refuses to print on photo paper, so I put files like this on a flash/thumb drive and take it to my local instant print shop where they can print on 100-lb. card stock.



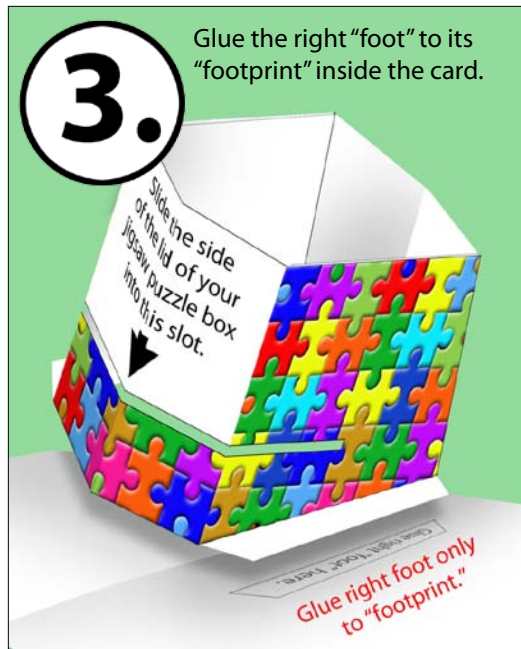
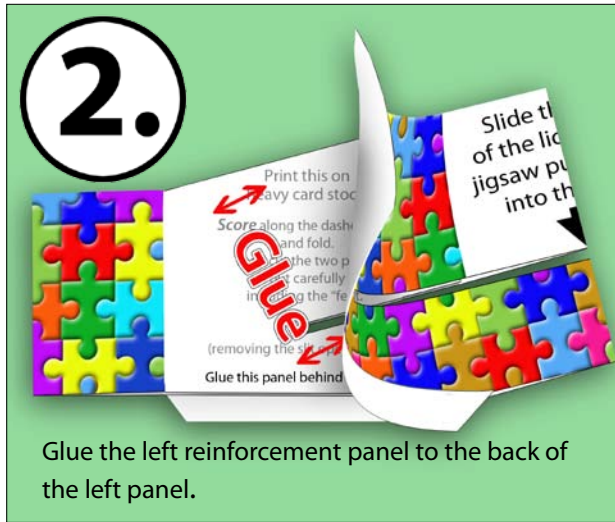
Optional: Once you've printed page 4 (the inside spread of the card), you can flip it around and print the outside page 5 on the back of that sheet, or draw or collage directly onto the outside pages.

The printing on the second side won't be aligned with the inside accurately, so use your craft knife to transfer the folding and crop marks on the "Inside pages" sheet to the "Front" side of the card. Carefully score* and fold the this page along the dashed center line, putting the "Right side footprint" on the inside of the folded sheet. Then cut the folded card on the crop marks.

These printed alignment points are important to position the folded pop-up easel so it won't stick out past the edges of the card.

Score* and fold the front/ side and back/reinforcement pieces on the other sheet. Then cut these folded parts out including their white glue tabs, removing slot areas and thin black outlines.

Water-based glues often cause paper to warp, so I like to use Uhu tube glue for projects like this. When a good, thin layer of Uhu has been spread on a glue tab and it's held in place for a few moments, it will dry quickly and adhere well.

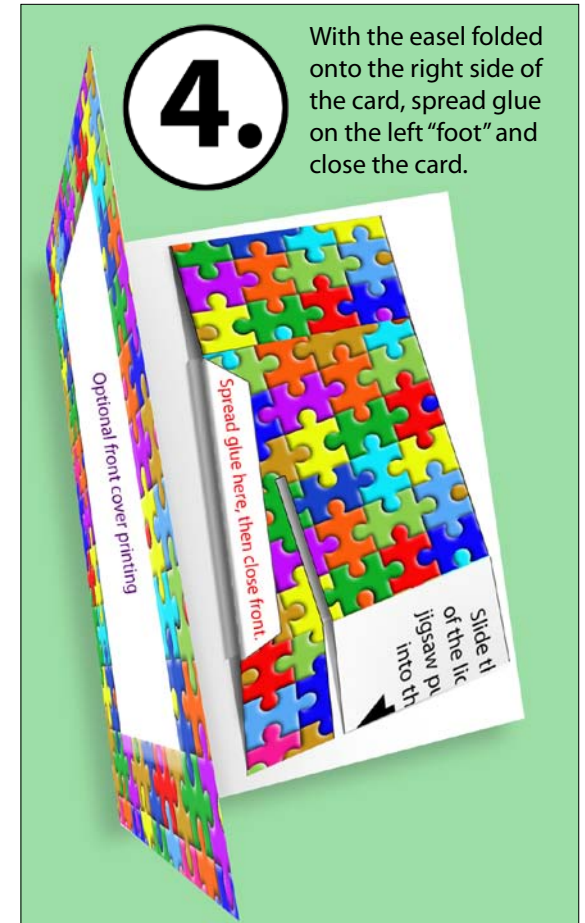


1. & 2. Glue the reinforcement panels inside the side panels.

3. Glue the right side foot precisely onto the footprint on the inside of the card. Don't glue the left foot at this point. Hold the right foot until you're sure it's dry.

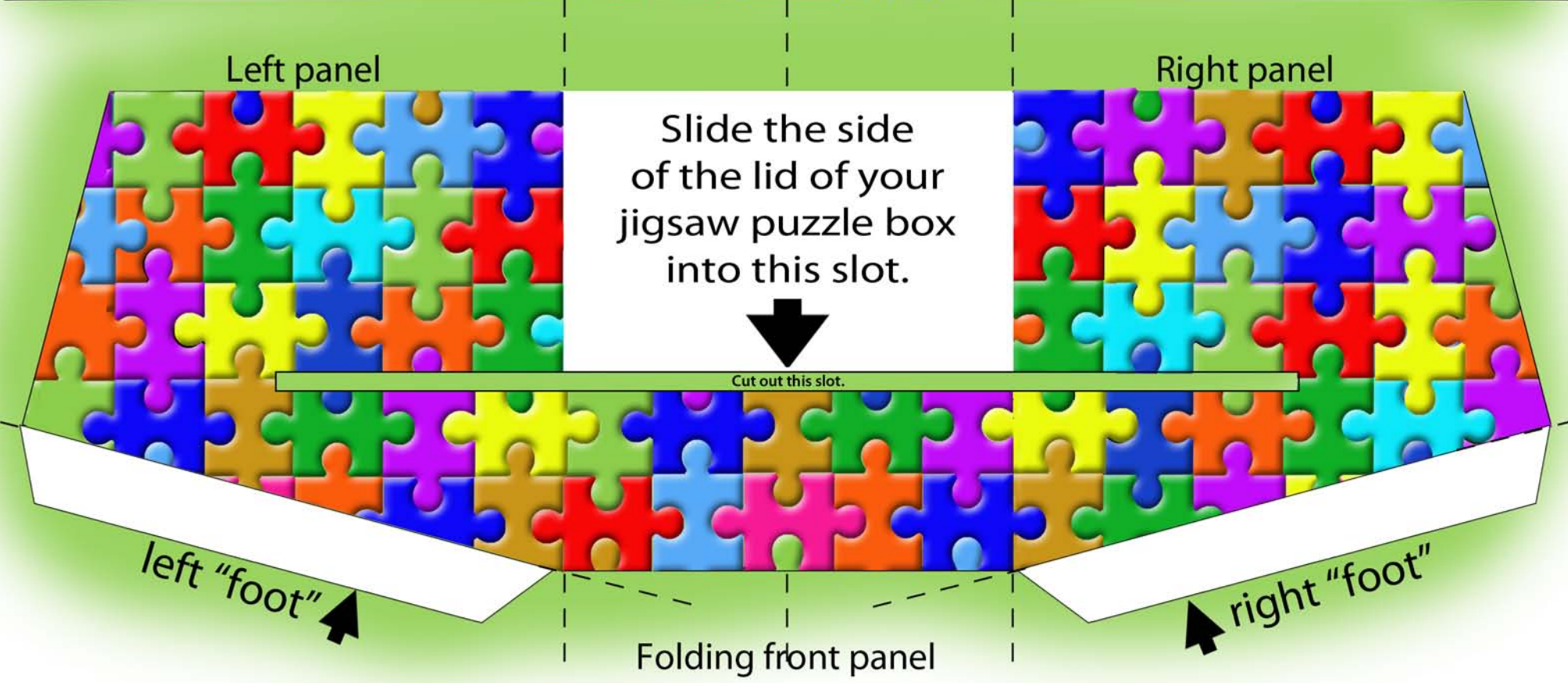
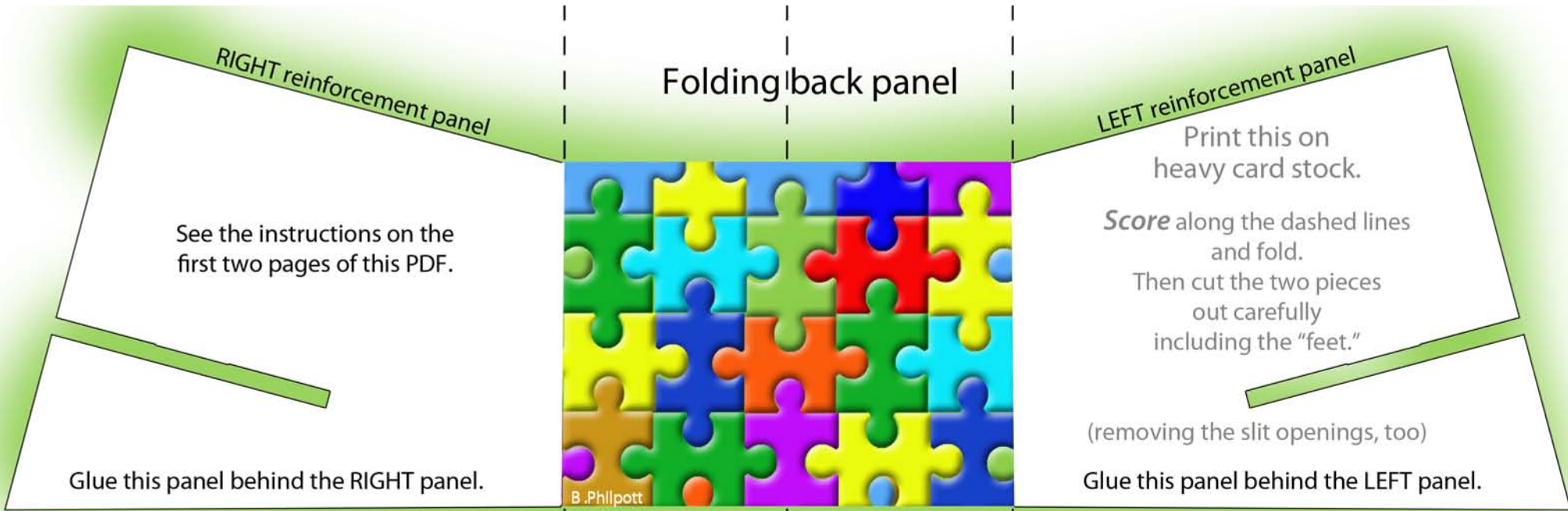
4. Spread glue on the underside of the left foot and hold the folded easel flat while you close the front of the card onto it. This assures proper alignment of the left foot. Hold, clamp or weight the card closed until you're sure the glue has dried.

** Scoring along a straight edge before folding along a fold line is important in order to get accurate folds. Special scoring tools are available, but you probably have something on hand that will work wonderfully. A butter knife may be too sharp (you don't want to cut or scratch the stock, just compress the fibers), but a fully depleted ballpoint pen works very well.*



Since you do jigsaw puzzles, you might be interested in this free method of creating replacements for any missing pieces. Here's a link to how to do it with trusted, proven, free open-source software (or Photoshop if you have it): <http://brucephilpott.com/photos/puzzle-part.htm>





Print this on heavy card stock.
This side is the **INSIDE spread** of the pop-up card.
You can draw or print a custom image/text on the opposite (out)side if you want.

fold

Carefully pierce with a craft knife to transfer these crop and fold marks to the outside of the card

Glue right "foot" here.



Bottom

fold

Optional:

Flip the inside page around and print this on the other (out)side.

<http://brucephilpott.com/photos/puzzle-part.htm>

Bottom

