



# The Leaning Tissue Box Puzzle Box Lid Easel

*When I work on a jigsaw puzzle, I like to refer to the picture on the lid of the box, but would like it to face me and not take up much room on the puzzle table. This thought was crossing my mind just as I pulled the last Kleenex from a box of tissues, and the thoughts converged to form this jigsaw puzzle box lid easel.*



I cut an eighth-inch slot into the front of the box extending into the sides of the box (the depth of the puzzle box lid). I slid the lid in place and it fit perfectly, but it fell face down toward me.

I cut a wedge out of the bottom of the box to make it lean backward a bit (facing me even better) and I had an easel!

Here are the specifics of my design. I look forward to hearing about your improvements.

### STRICTLY OPTIONAL IDEAS:

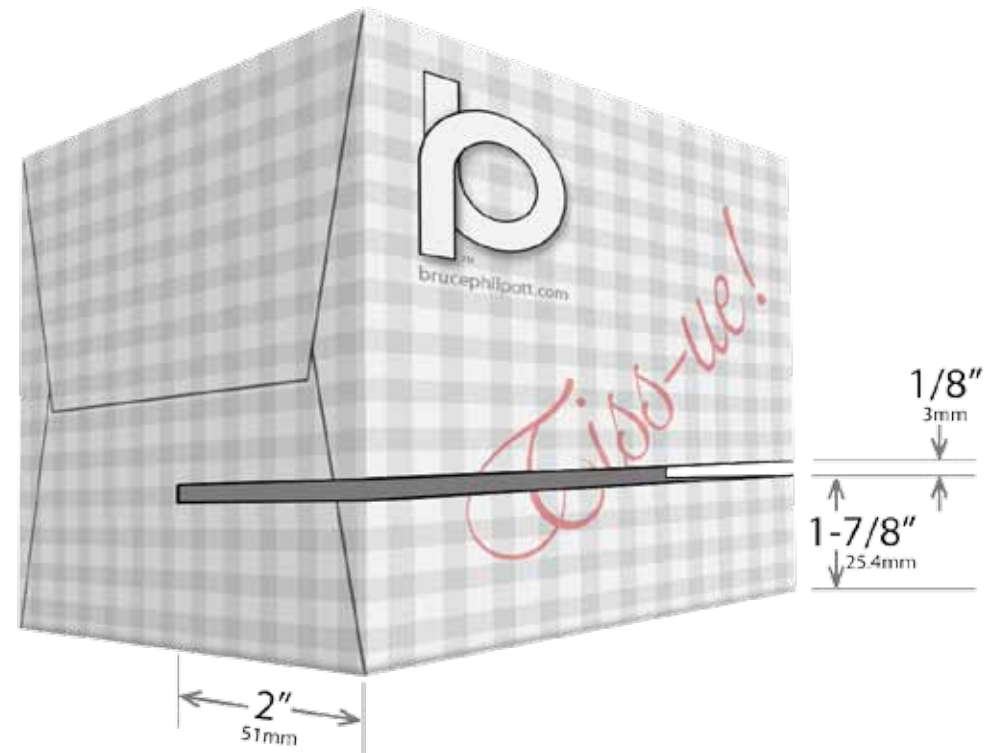
To further stabilize this easel, you could add glue anywhere you see the manufactured box flaps have any space between them, and you could cut these lines with the fine saw attachment to a Dremel tool.

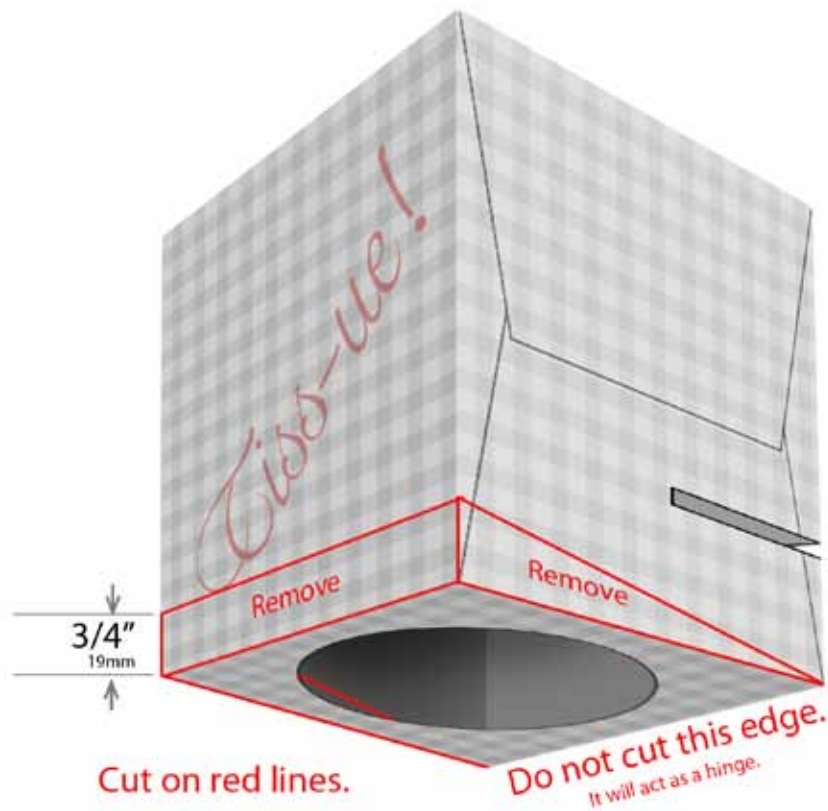
**1.** I cut the lid slot a couple of inches up from what's now the base (of the upside-down box), cutting parallel with the table top, continuing into the flapped sides of the box (still parallel with the table top) far enough to fully receive the side of the puzzle box lid.

Do not pull apart the glued flaps that keep the cube rigid. A dented box isn't a good candidate.

I turned my tissue box upside down, as you'll see.

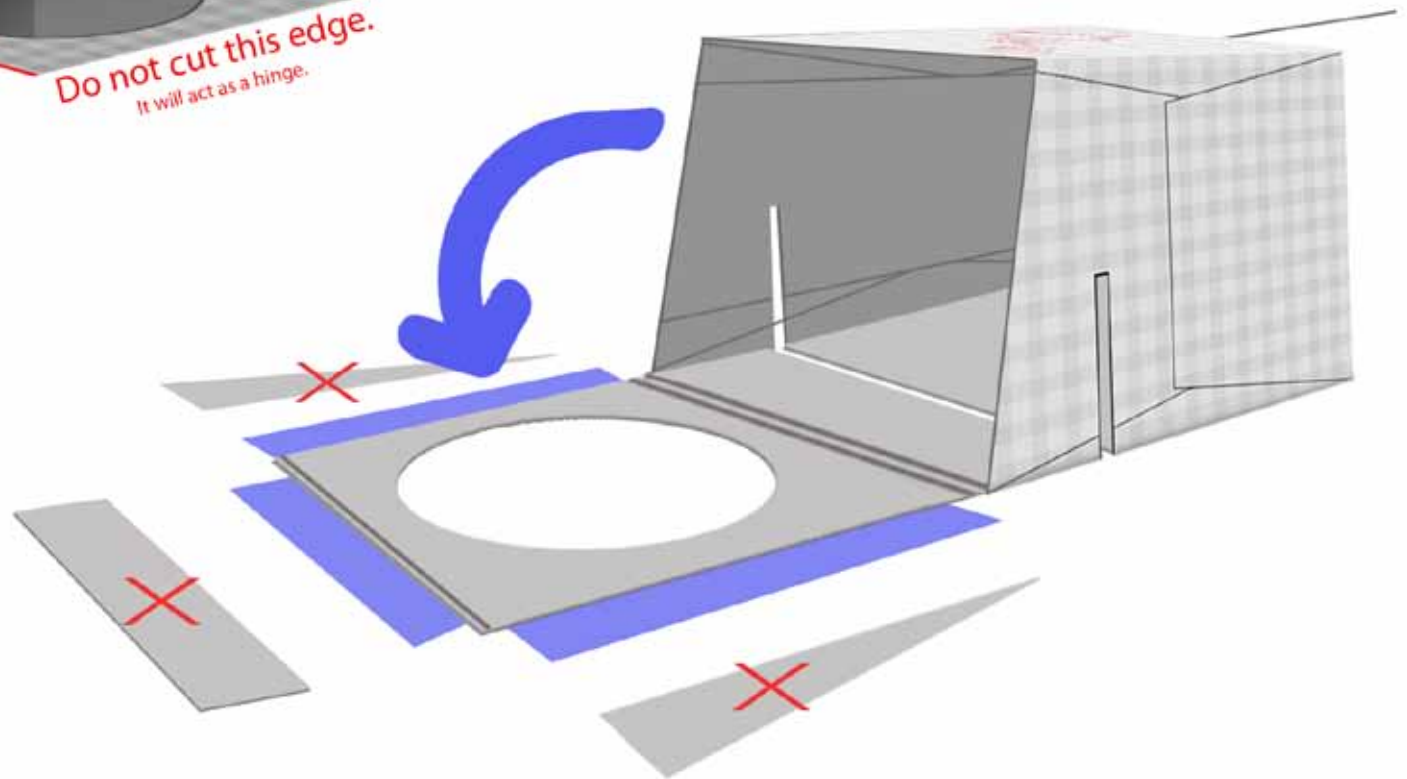
In these illustrations, if you watch for the lid slot I cut and the glued side flaps, they'll orient you as you follow the steps. I drew pencil lines on my box with a straight edge and followed them carefully with an X-acto knife. Everything fits better if these cuts are straight.





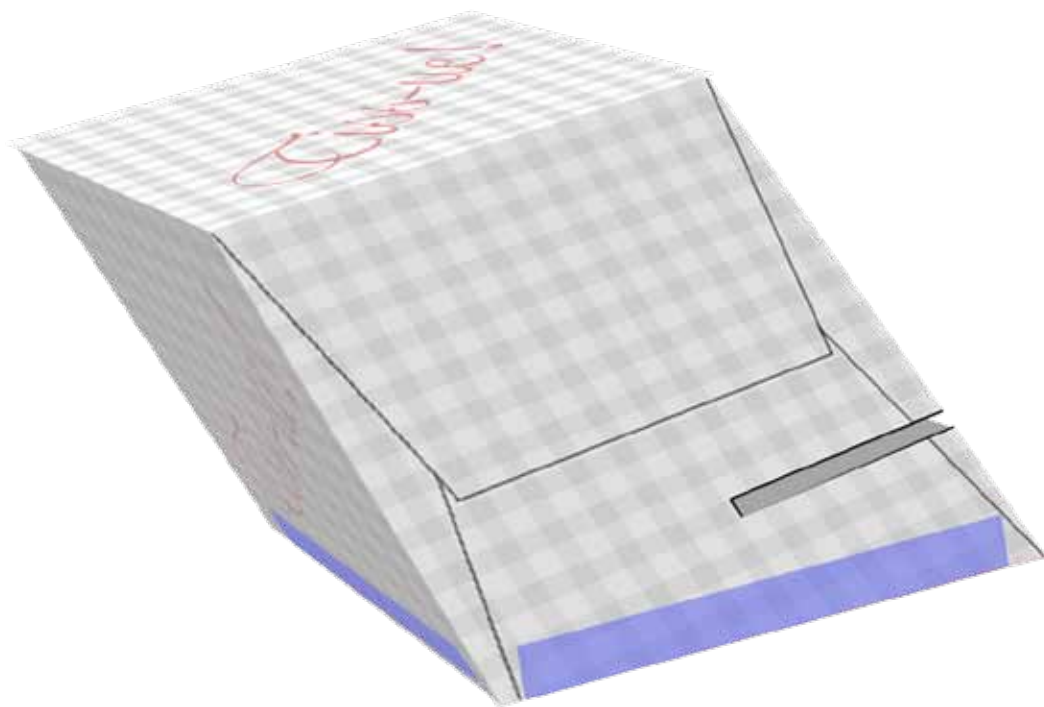
**2.** On the opposite side of the box from that slot, I made a thin cut 3/4" up from the base (again, parallel to the table top) all the way across that side. From the ends of that cut, I continued cutting on the flap sides, diagonally to the far bottom corner on each side. I also cut straight down to the corners of this side, then along the bottom edges of the flapped sides, removing those triangles. Then I cut along the bottom corner, removing the rear rectangle as shown.

**3.** I laid the box slot-side down on the table and pulled the base (the former dispensing top) down onto the table. I taped Scotch tape (shown here as blue for clarity) under the three unattached sides of the base as shown, and...

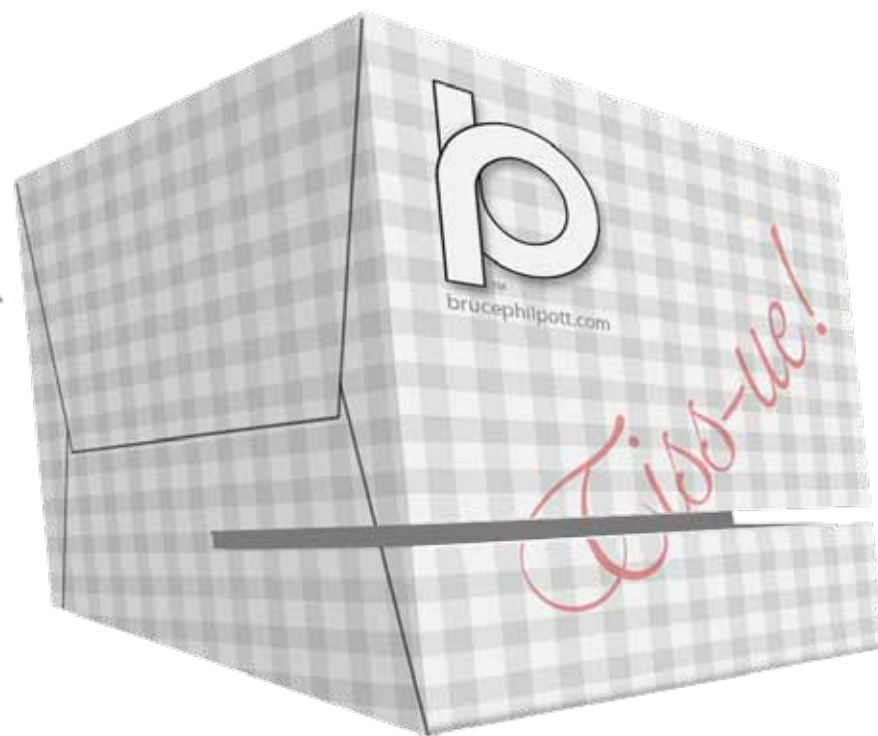




**4.** Brought the rest of the cube up onto its base and secured those Scotch tape flaps. The leaning, slotted box is complete. Enjoy.



**Complete**



Since this jigsaw puzzle lid easel interested you, you may also be interested in printing a replacement puzzle piece when you realize one is missing: <http://brucephilpott.com/photos/puzzle-part.htm>

Copyright © 2021 Bruce Philpott